

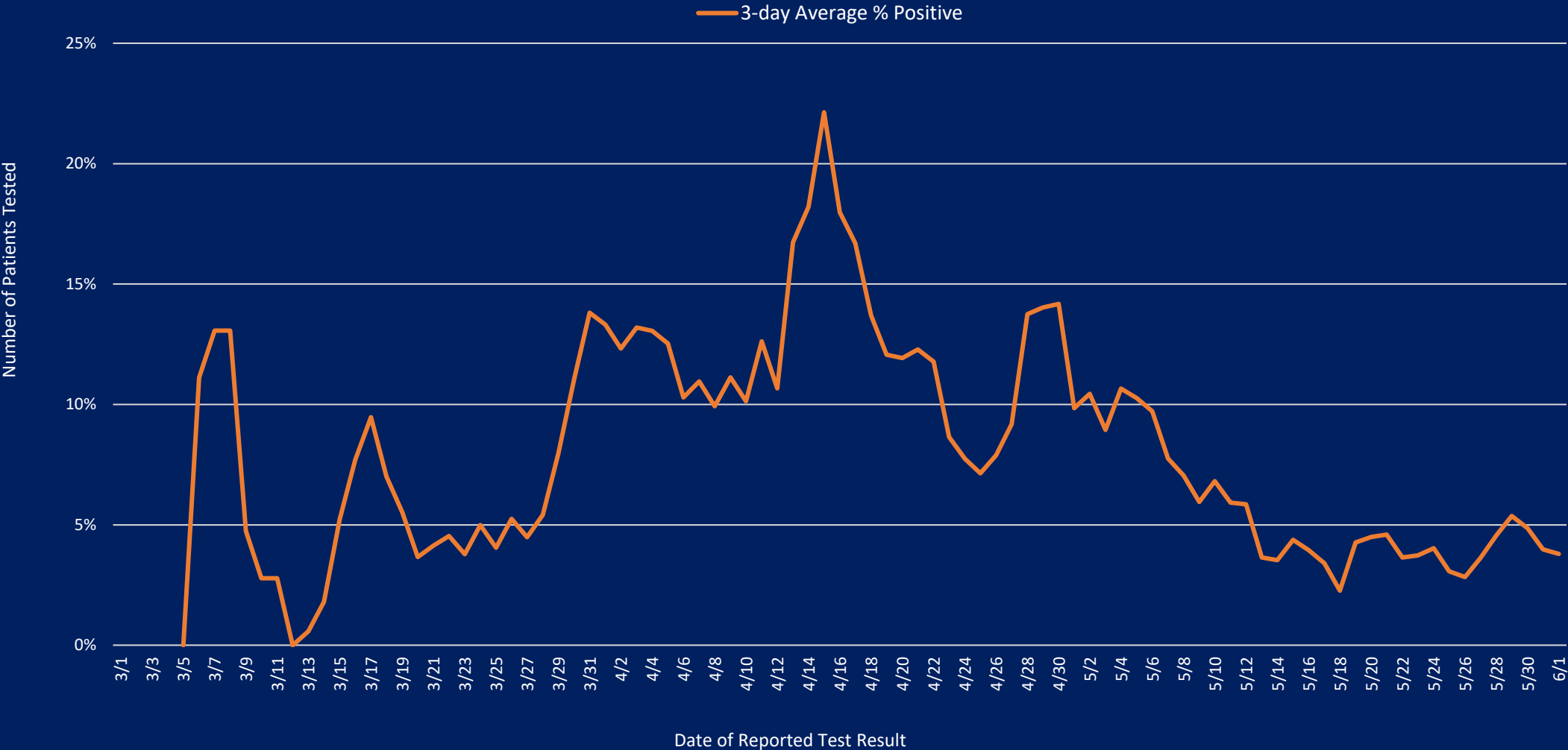
The background of the image features a large, faint, circular seal of the State of New Hampshire. The seal contains a ship (the USS Raleigh) on the stocks, with a rising sun in the background, all encircled by a laurel wreath. The words "SEAL OF THE STATE OF NEW HAMPSHIRE" are inscribed around the perimeter, and the date "1776" is at the bottom flanked by two stars.

**GOVERNOR CHRISTOPHER T. SUNUNU**

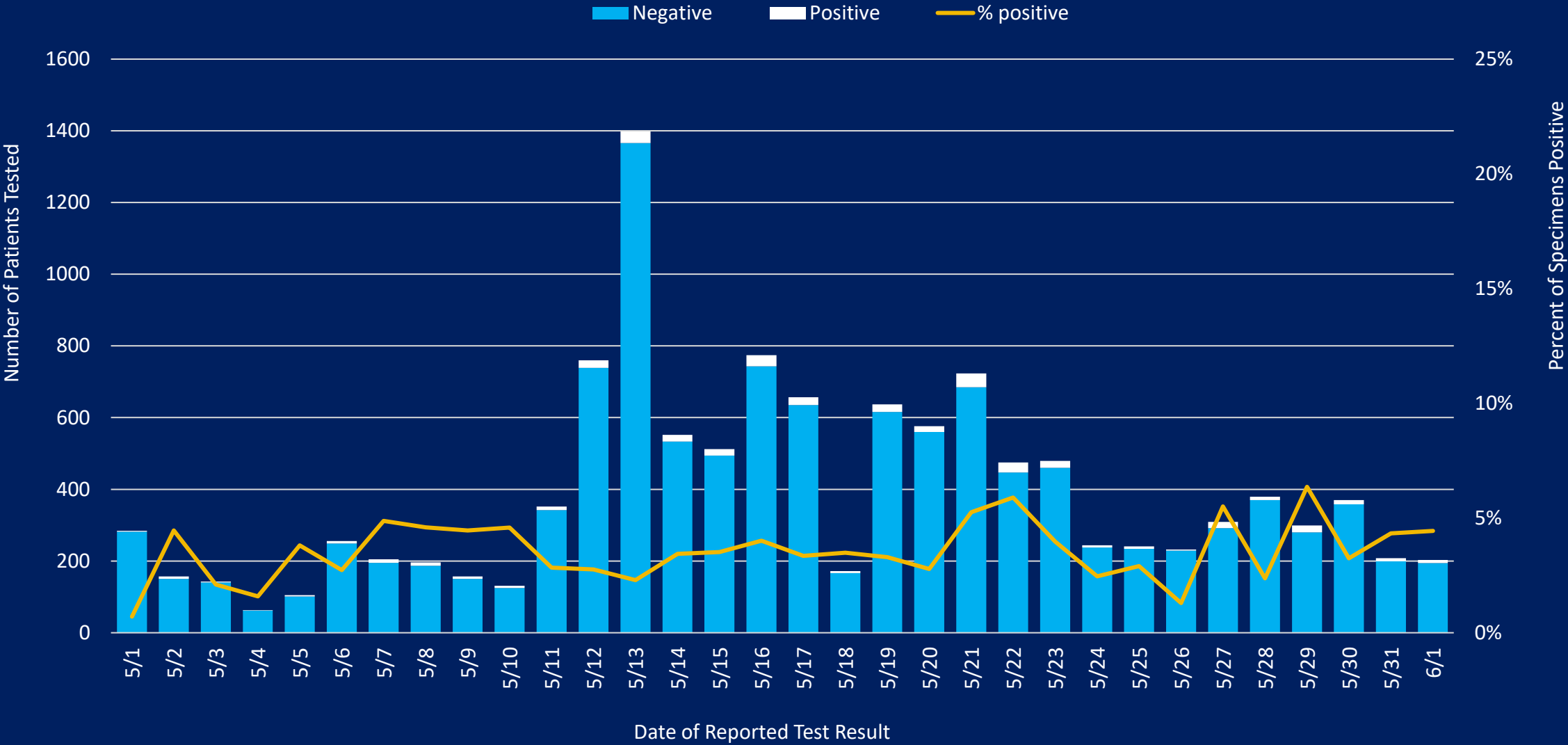
---

STATE OF NEW HAMPSHIRE

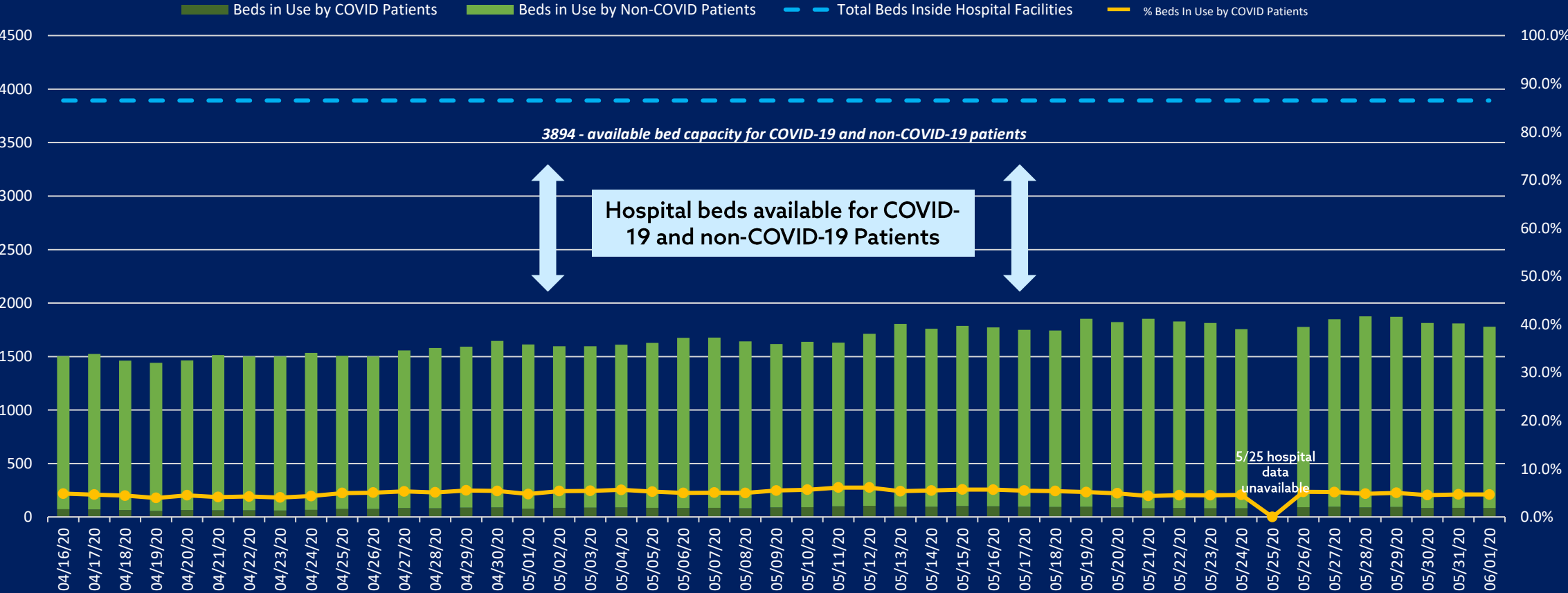
# COVID-19 3-Day Average Test % Positive in New Hampshire



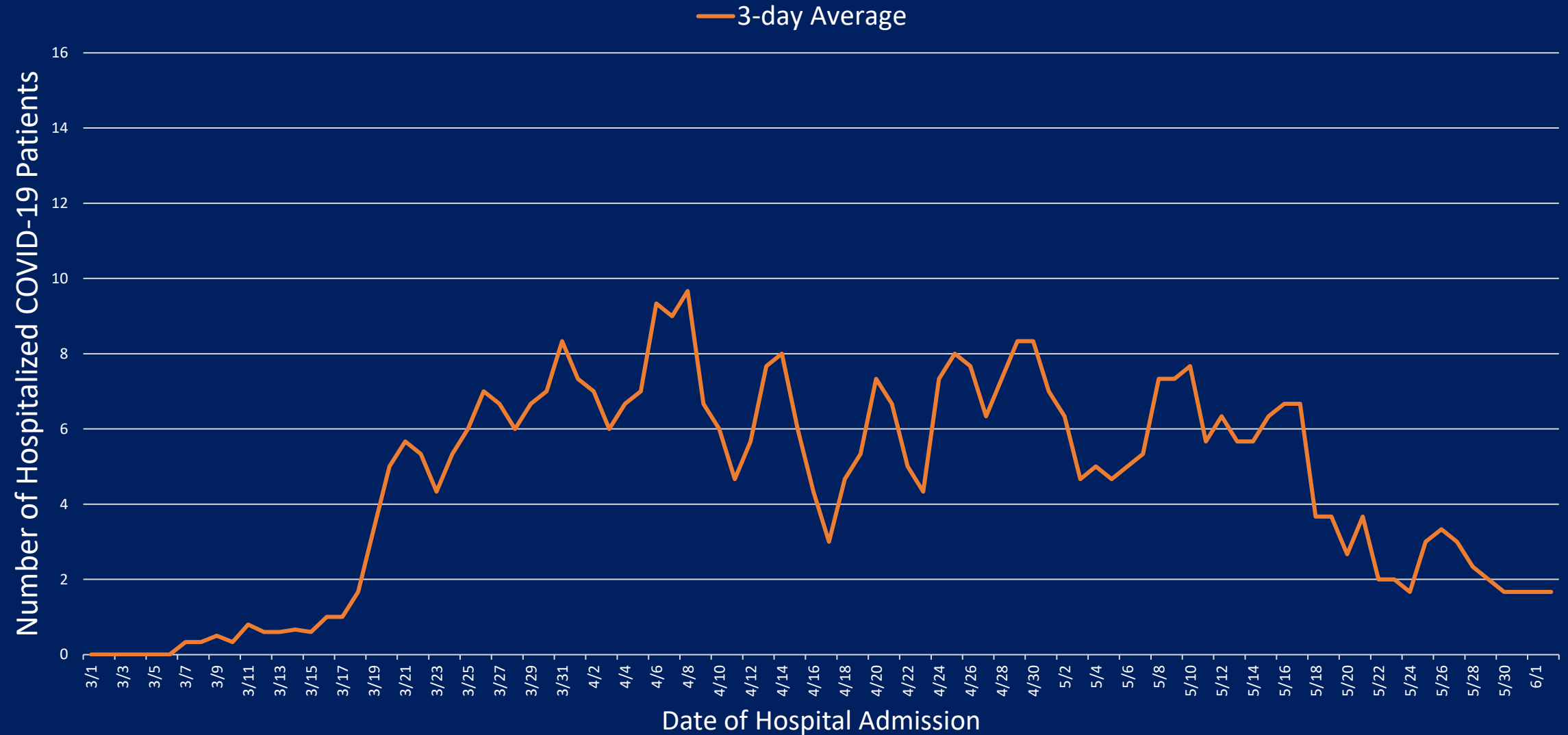
# Number of Patients Tested for COVID-19 Antibodies by Test Result, New Hampshire



# Hospital Census for COVID-19 and non-COVID-19 Patients

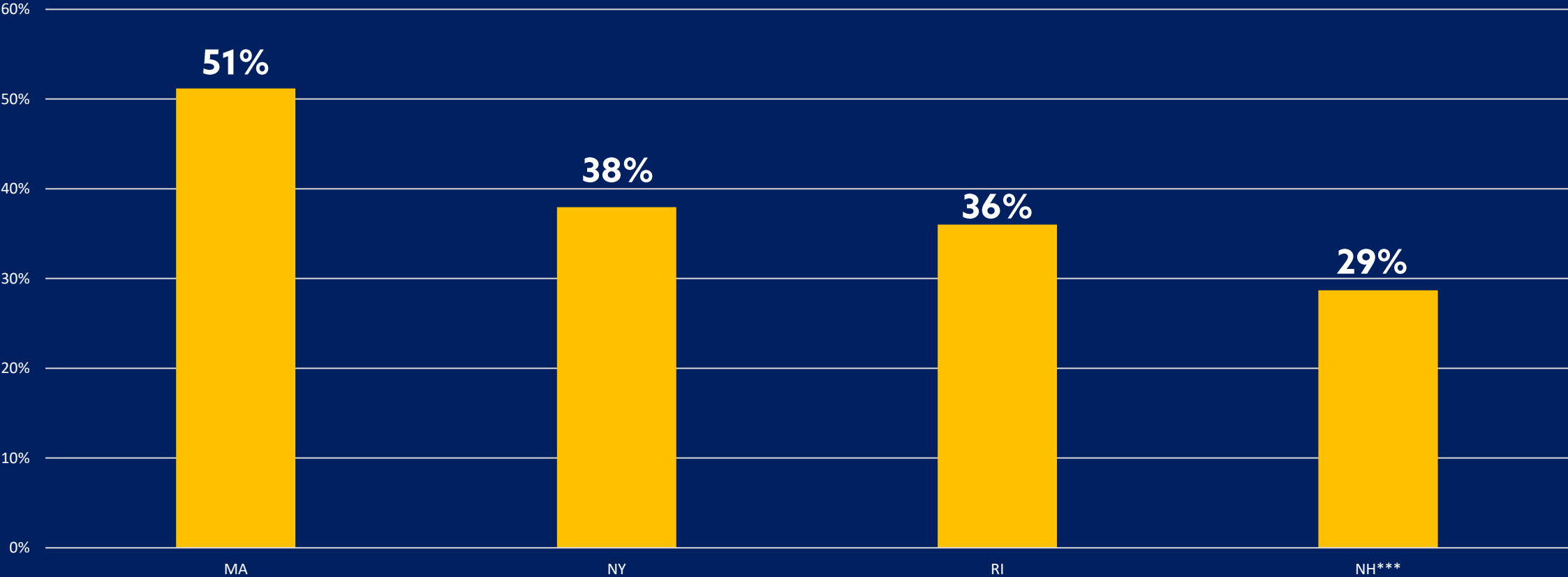


# Number of Hospitalized COVID-19 Patients by Date of Admission in New Hampshire



# Long Term Care in NH and New England/NY

Percent of Long-Term Care Facilities with COVID cases

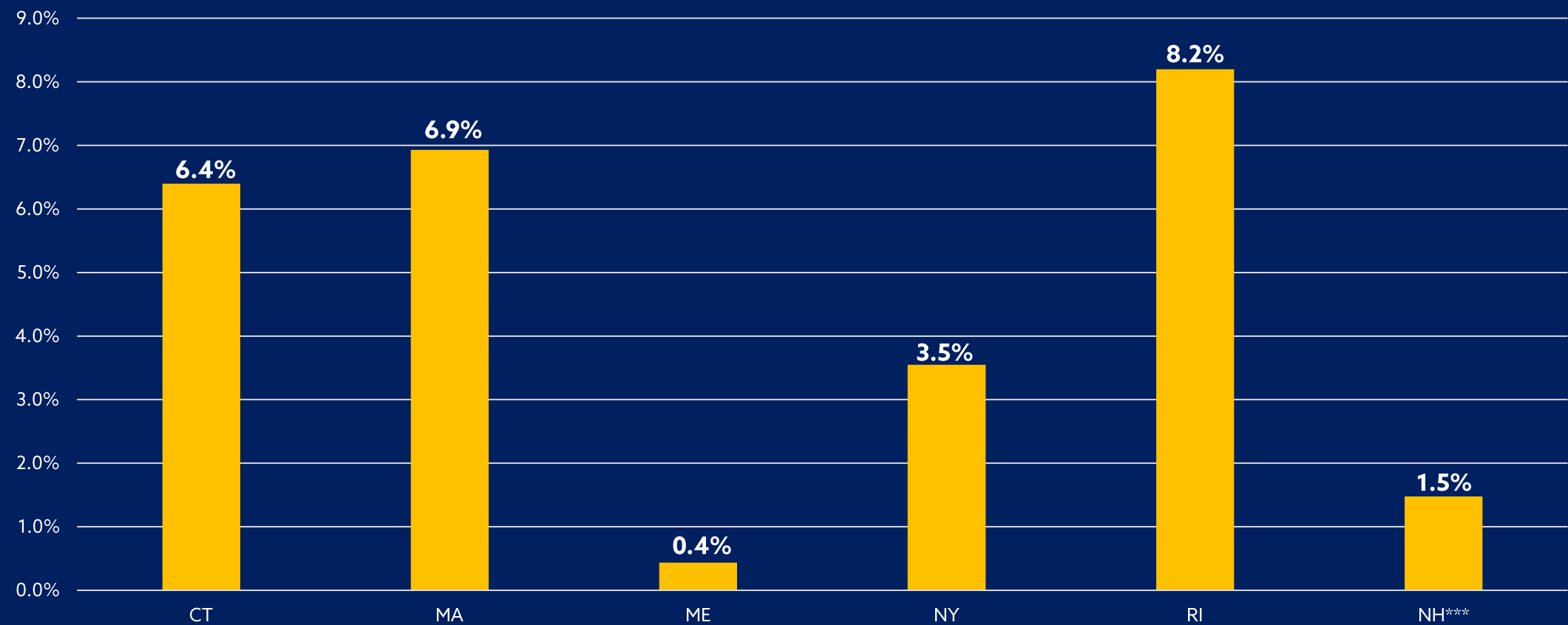


State	LTC Facilities*	LTC Facilities with COVID**
MA	680	348
NY	1159	440
RI	150	54
NH***	223	64

\*Reported to States by NH DHHS  
\*\*Through 5/28/2020; Source: <https://www.kff.org/health-costs/issue-brief/state-data-and-policy-actions-to-address-coronavirus/>  
\*\*\*Date as of 6/1/2020

# Long Term Care in NH and New England/NY

Long-Term Care Facility Deaths as % of Beds

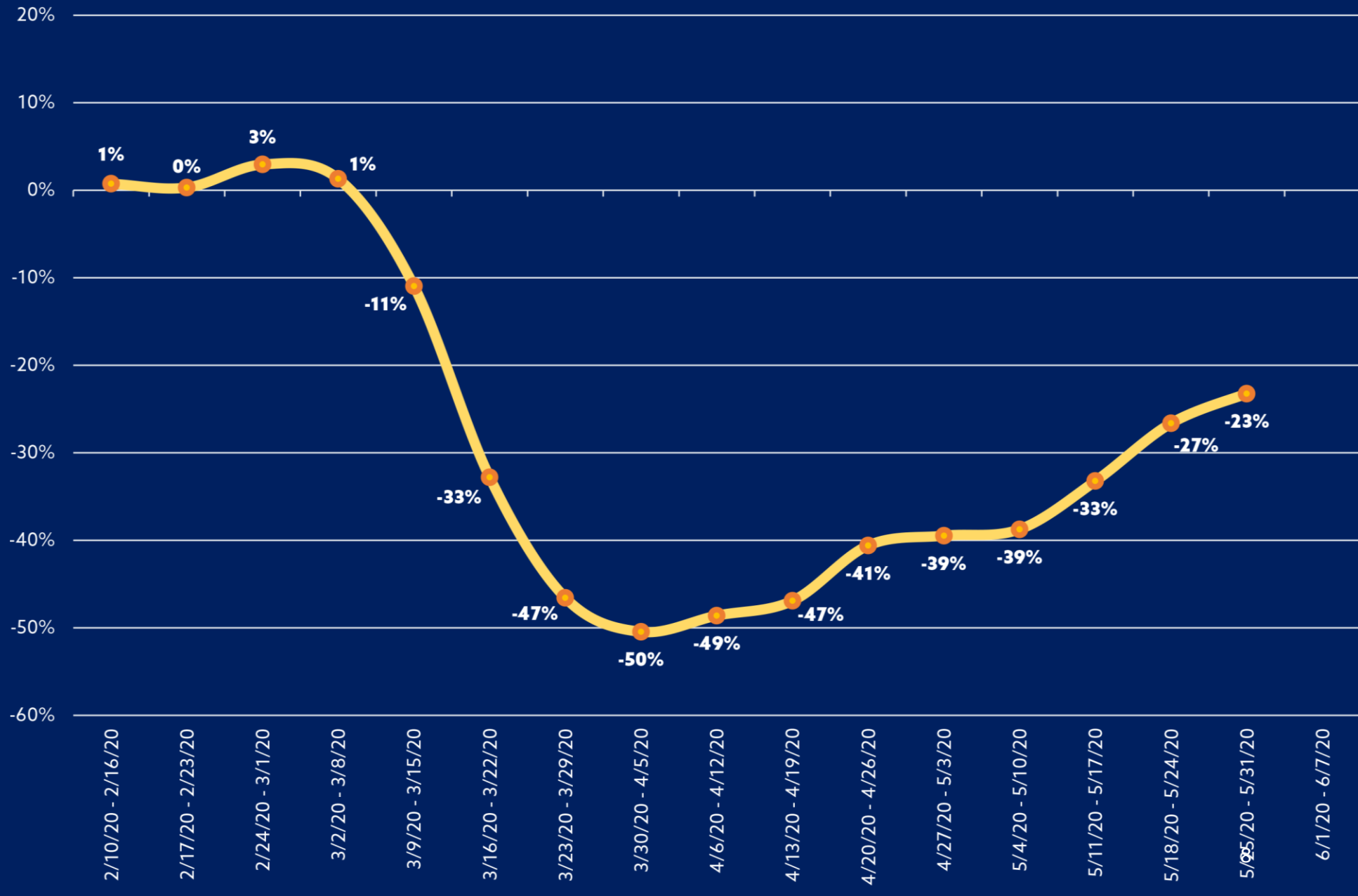


State	Total Beds*	LTF Facility Deaths**	
CT	39006	2496	6.4%
MA	58301	4041	6.9%
ME	8750	38	0.4%
NY	170824	6062	3.5%
RI	5709	468	8.2%
NH***	13741	203	1.5%

\*Reported to States by NH DHHS  
\*\*Through 5/28/2020; Source: <https://www.kff.org/health-costs/issue-brief/state-data-and-policy-actions-to-address-coronavirus/>  
\*\*\*Date as of 6/1/2020

# Weekly Percent Differences: 2020 vs. 2019

## Concord I-93 Exit 12-13





# Continuing Claims as a % of Labor Force – May 16

